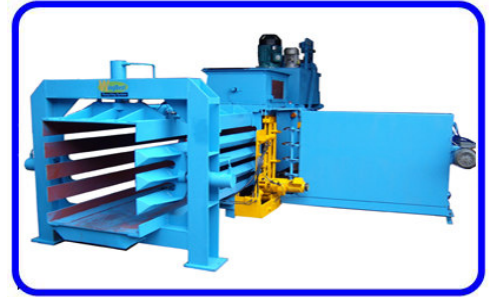




永恆環保機械有限公司 Wingbest Machinery Ltd



Automatic hydraulic Waste Paper Baling Press System

Model type : ME-40

suitable narrow space for shopping centre & supermarket. (handling for miscellaneous paper, newspaper, paper, magazine)

Configuration : Hooking Lever Wire-Tie System

Baler Spec	Total Power : 30Kw (40 HP)	Main Pressing Power : 55,000kgf	M/C Weight : 6100kg
	Inlet Size : 800W x 1200L	Inlet Capacity : 0.9M ³	Compress Weight : 450kg/M ³
	Bale Size : 800W x 850H x 1300L	Bale Weight : 440kg±5%	Wire/bale : 4 wires

The Main function include :

- ◆ Computer control system can be chosen between automatic & manual operation, the inlet / pressing motion would be acted alternatively through the loading sensor.
- ◆ Keep automatically controlled compression ratio to set suitable bale size in advance.
- ◆ Wire-tie system is accurately to tie the bale faster & harder. Wire-tie counter can be set freely, the bale size would be solid & evenly, low wire knots to reduce wire usage.
- ◆ The best effective design to operate the high pressure flow recovery with low noise. Under full load condition, the inlet will be rest to save energy.
- ◆ Protective signal function to prevent the human mistake / obstacle / over flow pressure alert.
- ◆ Machinery structure is very clear and easy to operate, suitable narrow space for shopping centre & supermarket.

ME-40 Bale Size : 0.8W x 0.85H x 1.3L

M/C Size : 6580L x 2980 W x 1990 H(mm)

Output / hr Weight / Bale	4.8t / hr Miscellaneous Paper 440kg ± 5%	4.8t / hr Newspaper 440kg ± 5%	3.6t / hr Paper 380kg ± 5%	4.1t / hr Magazine 465kg ± 5%
------------------------------	--	--------------------------------------	----------------------------------	-------------------------------------

Characteristic of the Baling Press :

Main Motor	40HP/ 3P/ 380V/ 50Hz	1 set
Oil Pressure Pump	Main oil pressure blade pump (91 liter/min)	1 set
	Auxiliary oil pressure blade pump (162 liter/min)	1 set
Hydraulic pressure motor	Wire tie case TB165AT	1 unit
	Hooking lever TB0260AT	1 unit
Working Pressure	225kg/cm ²	
Main Pressing Power	55,000kgf	
Hydraulic Cylinder	Main hydraulic cylinder	∅ 180x1550mm 1 pieces
	Shrinking outlet hydraulic cylinder	∅ 100x120mm 3 pieces
	Wire cut hydraulic cylinder	∅ 50x80mm 1 piece
	Wire M/C hydraulic cylinder	∅ 50x120mm 1 piece
Hydraulic Oil	AW68 of petroleum	
Capacity of the fuel tank	800 liter (please keep oil level on upper limit for normal condition)	
Max Oil Temp.	>65°C (over 65°C would be alerted by alarm signal)	
Bale Size (mm)	800W x 850H x 1300L(adjustable length)	
Bale Weight	The length of packing reaches 1300mm then the bale weight is approx. 440 kg ±5%	
Bale Speed	3.6-4.8 ton/hr	
Wire Diameter Spec.	2.5-2.8mm (2 times wire special treatment, 4 straps of bale tie)	
The Roll Of Wire Spec.	320mm external dia. × 170 internal dia. × 150 thickness (need to hold 8 rolls before operation)	

香港廠：新界元朗洪水橋田心路 17 號 A

17A Tin Sam Road, Hung Shui Kiu, Yuen Long, HK

Tel : 2445 3555 Fax : 2146 1126

Web Site : www.wingbest.com.hk

國內廠：中國東莞市虎門鎮樹田村富安工業區

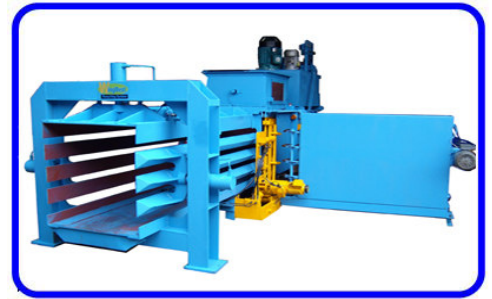
電話：769-8555 5533/ 8555 4282

傳真：769-8555 6826

網址：www.wingbest.com.cn



永恆環保機械有限公司 Wingbest Machinery Ltd



Automatic hydraulic Waste Paper Baling Press System

Model type : **ME-40D**

especially suction inlet system for pressing with shearing wasted paper. (suitable for Printing Factory to handle the wasted paper edges recycle)

Configuration : **Hooking Lever Wire-Tie System**

Baler Spec	Total Power : 22.5Kw (30 HP)	Main Pressing Power : 55,000kgf	M/C Weight : 5780kg
	Inlet Size : 800W x 1200L	Inlet Capacity : 0.9M ³	Compress Weight : 380kg/M ³
	Bale Size : 800W x 850H x 1300L	Bale Weight : 336kg±5%	Wire/bale : 4 wires

The Main function include :

- ◆ Computer control system can be chosen between automatic & manual operation, the inlet / pressing motion would be acted alternatively through the loading sensor.
- ◆ Keep automatically controlled compression ratio to set suitable bale size in advance.
- ◆ Wire-tie system is accurately to tie the bale faster & harder. Wire-tie counter can be set freely, the bale size would be solid & evenly, low wire knots to reduce wire usage.
- ◆ The best effective design to operate the high pressure flow recovery with low noise. Under full load condition, the inlet will be rest to save energy.
- ◆ Protective signal function to prevent the human mistake / obstacle / over flow pressure alert
- ◆ The suction inlet system can be chosen by customers. The baler is especially suitable for Printing Factory to handle the wasted paper edges; it is fully automatically to make the workshop without rubbish & dust

ME-40D Bale Size : 0.8W x 0.85H x 1.3L

M/C Size : 6180L x 2980 W x 1990 H(mm)

Output / hr Weight / Bale	3.6t / hr Miscellaneous Paper 336kg ± 5%	3.6t / hr Newspaper 336kg ± 5%	2.7t / hr Paper 290kg ± 5%	3.2t / hr Magazine 365kg ± 5%
------------------------------	--	--------------------------------------	----------------------------------	-------------------------------------

Characteristic of the Baling Press :

Main Motor	30HP/ 3P/ 380V/ 50Hz	1 set
Oil Pressure Pump	Main oil pressure blade pump (91 liter/min) Auxiliary oil pressure blade pump (162 liter/min)	1 set 1 set
Hydraulic pressure motor	Wire tie case TB165AT Hooking lever TB0260AT	1 unit 1 unit
Working Pressure	225kg/cm ²	
Main Pressing Power	55,000kgf	
Hydraulic Cylinder	Main hydraulic cylinder \$ 180x1550mm Shrinking outlet hydraulic cylinder \$ 100x120mm Wire cut hydraulic cylinder \$ 50x80mm Wire M/C hydraulic cylinder \$ 50x120mm	1 pieces 3 pieces 1 piece 1 piece
Hydraulic Oil	AW68 of petroleum	
Capacity of the fuel tank	800 liter (please keep oil level on upper limit for normal condition)	
Max Oil Temp.	>65°C (over 65°C would be alerted by alarm signal)	
Bale Size (mm)	800W x 850H x 1300L(adjustable length)	
Bale Weight	The length of packing reaches 1300mm then the bale weight is approx. 360 kg ±5%	
Bale Speed	2.7-3.6 ton/hr	
Wire Diameter Spec.	2.5-2.8mm (2 times wire special treatment, 4 straps of bale tie)	
The Roll Of Wire Spec.	320mm external dia. × 170 internal dia. × 150 thickness (need to hold 8 rolls before operation)	

香港廠：新界元朗洪水橋田心路 17 號 A

17A Tin Sam Road, Hung Shui Kiu, Yuen Long, HK

Tel : 2445 3555 Fax : 2146 1126

Web Site : www.wingbest.com.hk

國內廠：中國東莞市虎門鎮樹田村富安工業區

電話：769-8555 5533/ 8555 4282

傳真：769-8555 6826

網址：www.wingbest.com.cn